

WELLINGTON HOUSING DEVELOPMENT

4444/4446 Wellington Road, Nanaimo, BC

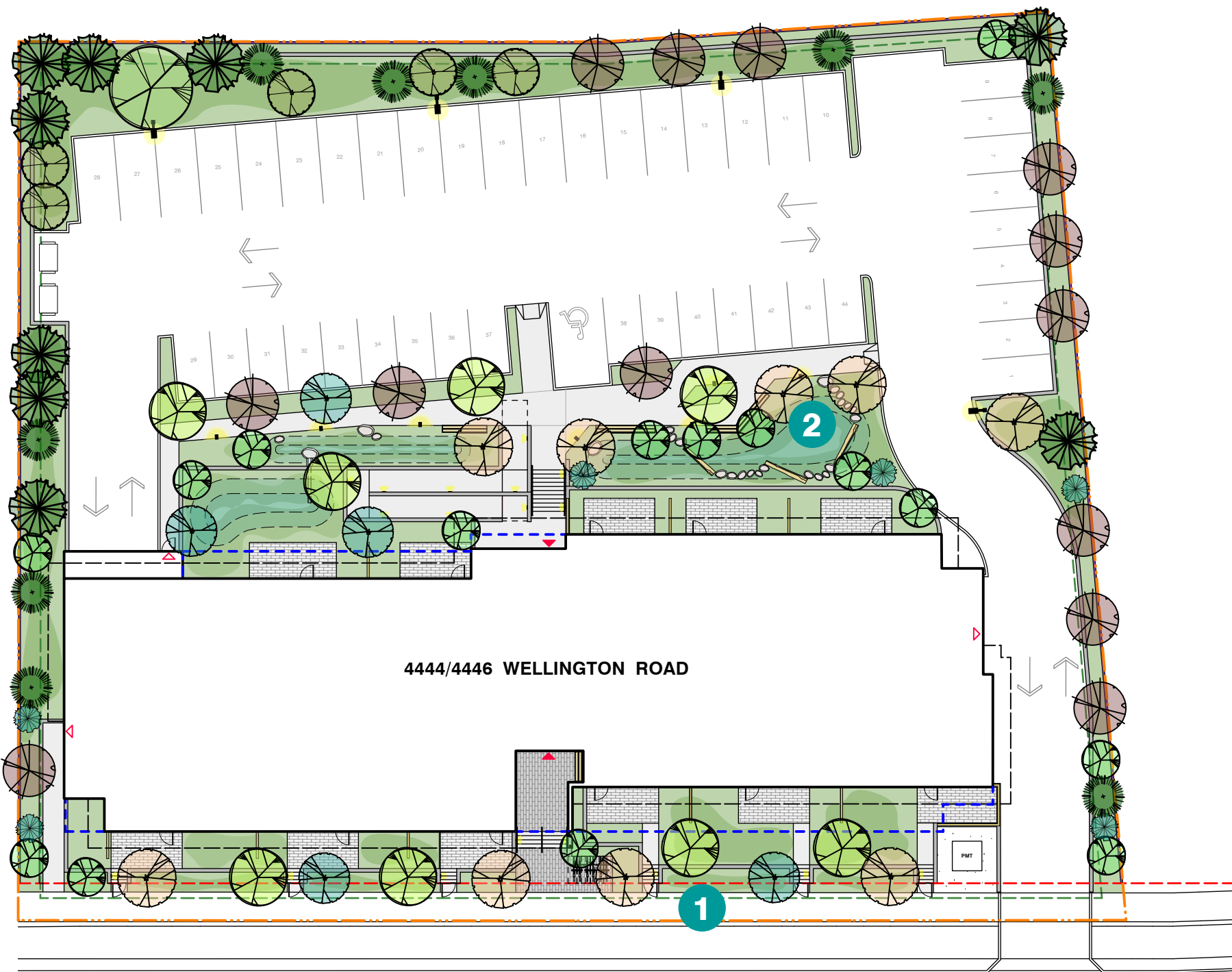
LANDSCAPE ARCHITECTURAL DRAWINGS

ISSUED FOR DP - OCTOBER 15, 2025

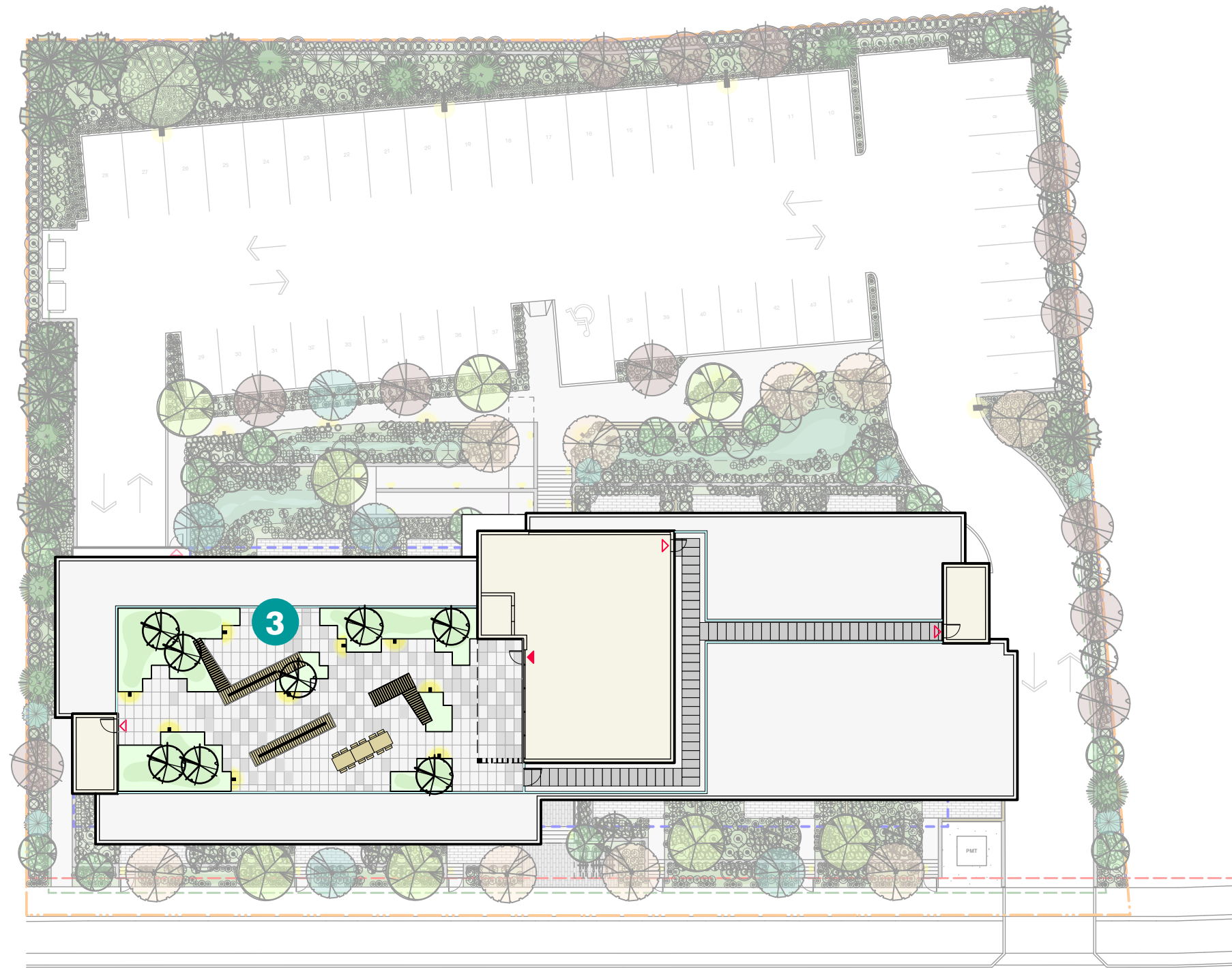
LANDSCAPE DRAWING SCHEDULE

L0.00	Cover Page	L1.04	Landscape Details
L0.01	Landscape Concept	7.	Lighting - Type 01- Bollard
L1.01	Landscape Plan	8.	Lighting - Type 02 - Recessed Wall
L1.02	Landscape Rooftop Plan	9.	Lighting - Type 03 - Pole Mounted
L1.03	Landscape Details	L2.01	Planting Plan West
1.	Bench - Type 1, 2, & 3	L2.02	Planting Plan East
2.	Bench - Rofftop - Type 4, 5, & 6	L2.03	Planting Plan North
3.	Communal Table & Seating	L2.04	Planting Plan North
4.	Bicycle Rack	L2.05	Plant Legend, List & Notes
5.	Gate - Pedestrian Patio Entrance		
6.	Fence Type 01 - 1.8m Black Metal Picket		

NOT FOR CONSTRUCTION



LANDSCAPE KEY PLAN
SEE SHEET L1.02 FOR LANDSCAPE PLAN



ROOFTOP KEY PLAN
SEE SHEET L1.03 FOR LANDSCAPE ROOFTOP PLAN

1 Streetscape & Planting

Medium flowering deciduous trees and formal rows of ornamental & indigenous, evergreen & deciduous, groundcovers, perennial flowers, grasses, and shrubs, line the sidewalk. Shrubs are used to create a formal hedge with rows of softer / wilder perennial flowers in front. The intent is to create a layered vegetative screening for the ground floor units from the street.



01 Streetscape: medium sized deciduous trees & planting



02 Plantings: native ground covers form the base of the planting plan and ground the design in the local ecology



03 Flowering Perennials: perennial flowers are included to provide seasonal colour, interest, and support for local pollinators



04 Flowering Trees: ornamental cherry trees line the street and punctuate the landscape with spring colour



05 Flowering Shrubs: native flowering shrubs are included throughout the site plantings



06 Deciduous Trees: small to medium sized maples add bright spring and fall foliage to the landscape

2 Raingarden Amenity Space

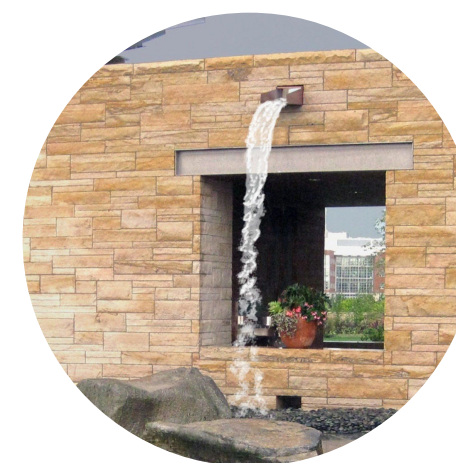
A series of three raingardens are included to support on-site stormwater management. Benches, logs, and boulders are integrated around the raingarden, creating an amenity space emmersed in a rich biodiversity of plants and trees. The logs and boulders create a secondary path of movement through the space, providing opportunities for open-ended play and interaction.



07 Raingarden: slough sedge and fallen logs as inspiration for raingarden design



08 Logs & Boulders: logs and boulders create a secondary path for movement through the raingarden



09 Wall Scupper: overflow water from the upper raingarden flows through a scupper in the retaining wall to the lower raingarden



10 Balancing Logs: logs become a way to move through the raingarden and allow for informal play & interaction

3 Rooftop Amenity Space

The rooftop amenity space includes benches, tables, and plantings, creating a mix of spaces for residences to enjoy the views to Long Lake and Mt. Benson.



11 Rooftop Gathering Space: raised planters define seating areas and create soil depth for small deciduous trees



12 Rooftop Planting: a mix of groundcovers and perennial plants, creating a rich biodiversity of plants on the roof



13 Platform Benches: large, wide timber benches for gathering



14 Communal Table: large table for group gathering

NOT FOR CONSTRUCTION

CLIENT

Windley Developments

RECEIVED
DP1405
2025-NOV-03
Current Planning

NO. | DATE | ISSUE

1 | 10-15-2025 | DP SUBMISSION

NO. | DATE | REVISION

PROJECT 25014

WELLINGTON HOUSING DEVELOPMENT

4444/4446 Wellington Road
Nanaimo, BC

LANDSCAPE CONCEPT

CITY FILE NO. XXX####

SCALE NTS

START DATE 2025-08-01

DB CM **CB** KS

L0.01



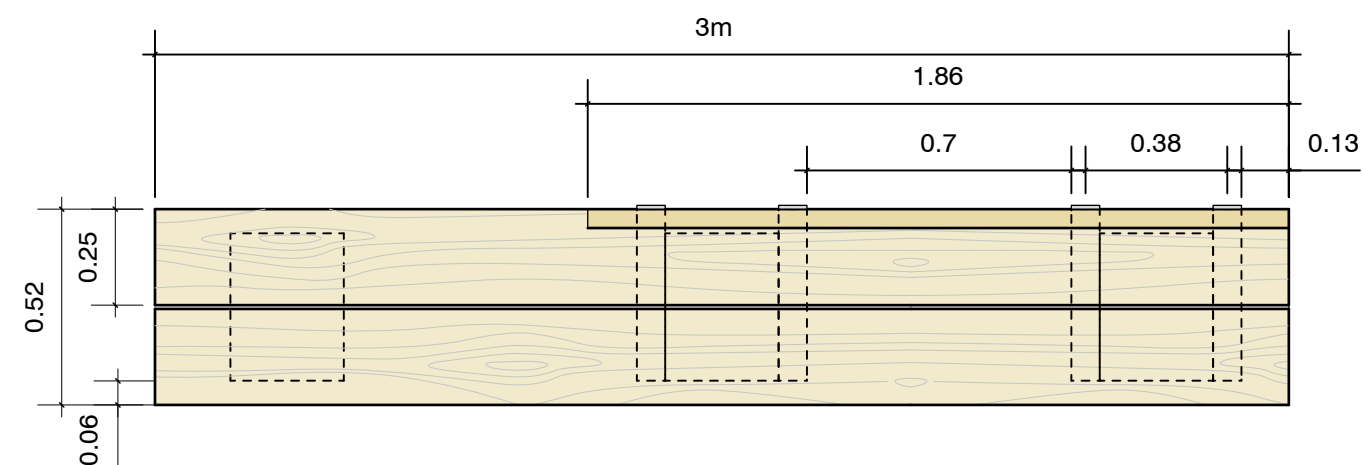


ROOFTOP LANDSCAPE PLAN
SCALE 1:150

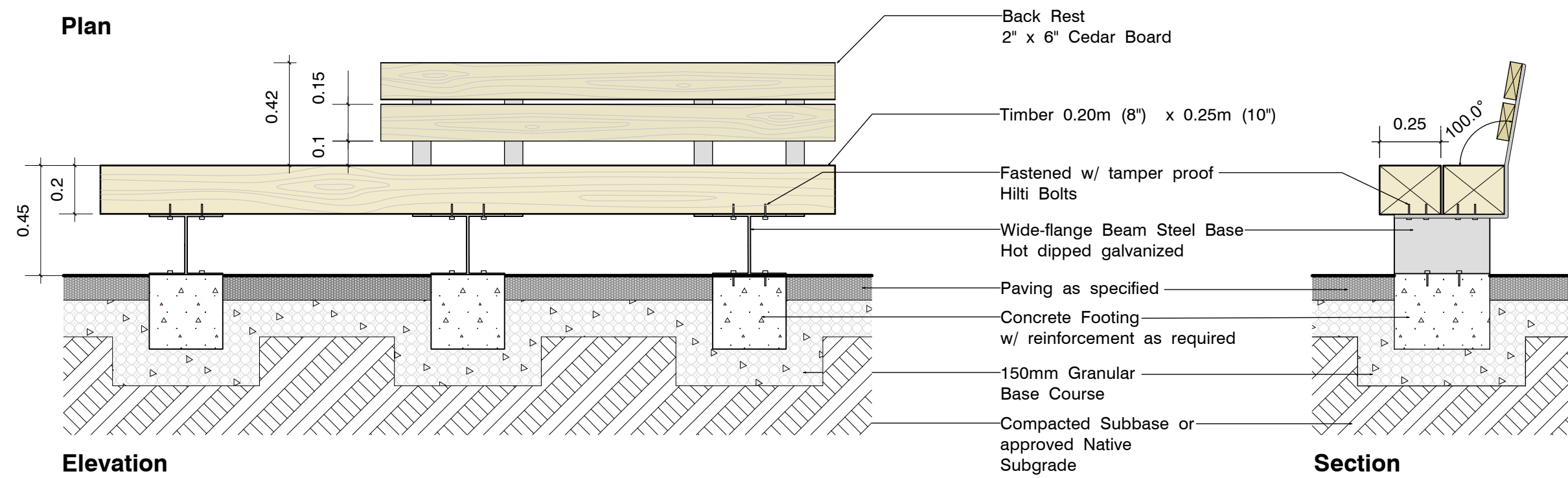
Refer to **Sheet L1.02** for Landscape Rooftop Plan

NOT FOR CONSTRUCTION

LANDSCAPE LEGEND	
	BENCH - TYPE 01 Quantity: 2 (see detail 1, sheet L1.03)
	BENCH - TYPE 02 Quantity: 1 (see detail 1, sheet L1.03)
	BENCH - TYPE 03 Quantity: 1 (see detail 1, sheet L1.03)
	BENCH - ROOFTOP - TYPE 04 Quantity: 1 (see detail 2, sheet L1.03)
	BENCH - ROOFTOP - TYPE 05 Quantity: 1 (see detail 2, sheet L1.03)
	BENCH - ROOFTOP - TYPE 06 Quantity: 1 (see detail 2, sheet L1.03)
	BICYCLE RACK Total Capacity: 6 Quantity: 3 (see detail 4, sheet L1.03)
	COMMUNAL TABLE & SEATING Quantity: 1 (see detail 3, sheet L1.03)
	ENTRANCE - MAIN EXIT
	FENCE - TYPE 01 - BLACK METAL PICKET Height: 1.8m (see detail 6, sheet L1.03)
	FENCE - TYPE 02 - SCREEN (wood screen between individual patios) Height: 1.8m (see Architecture)
	GATE - RESIDENTIAL PATIO ENTRANCE (black powder coated metal picket gate) Height: 1.07m (see detail 5, sheet L1.03)
	LANDSCAPE BALANCE LOG Quantity: 4
	LANDSCAPE BOULDER Quantity: 25
	LIGHTING - TYPE 01 - BOLLARD Quantity: 16 (see detail 7, sheet L1.04)
	LIGHTING - TYPE 02 - RECESSED WALL Quantity: 18 (see detail 8, sheet L1.04)
	LIGHTING - TYPE 03 - POLE MOUNTED Quantity: 4 (see detail 9, sheet L1.04)
	CONCRETE Area: 197m ²
	CONCRETE UNIT PAVER - TYPE 01 Area: 134m ²
	CONCRETE UNIT PAVER - TYPE 02 Area: 40m ²
	CONCRETE UNIT PAVER - TYPE 03 Area: 211m ²
	PLANTED AREA Area: 1045m ² (including raingarden) Soil Depth: 450mm
	RAINGARDEN Area: 121m ² Soil Depth: 450mm
	ROOFTOP PLANTING Area: 105m ² Soil Depth: 150 min. - 600mm max.



Plan



Elevation

Section

Notes:

Bench design is typical in material and form for Bench - Type 1, 2, and 3. The length and shape varies. See Landscape Plan, sheet L1.01 for size and shape.

Bench design is indicative only, intended to show the general character and scale of benches. Shop drawings required to be submitted to Landscape Architect for approval.

All wood to be selected tight knot cedar. No checks, splits, warps or wanes. All cut ends to be properly sealed.

Cedar to be finished with clear sealer as per manufacturers instructions. Contractor to confirm finish with Landscape Architect.

Specified Cedar may be substituted with reclaimed timbers. Salvaged timber from site is preferable. Contractor to coordinate with Landscape Architect.

Rooftop Wood Platform Bench
(with & without back rest)

Quantity: 3

Notes:

Images are indicative of design intent only, detail drawings for specific benches will be provided with Building Permit drawing submission.

Metal frame with wood seat and back rest.

Benches to be mounted to rooftop patio.



Image Precedent

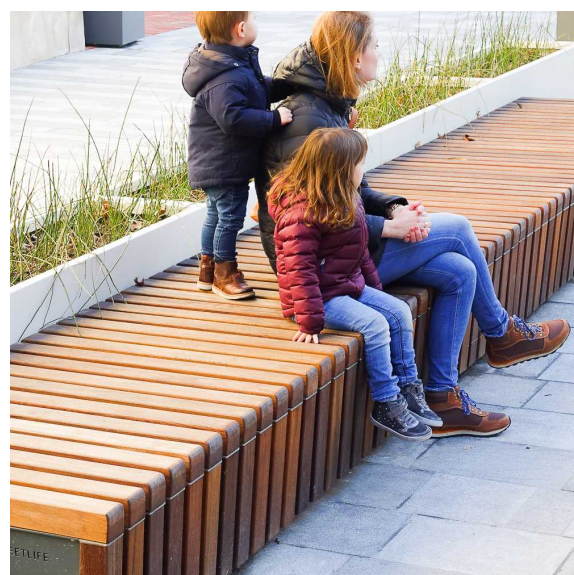


Image Precedent

Communal Table & Seating
Quantity: 1

Notes:

Image is indicative of design intent only, detail drawings for specific table & seating (benches / stools) will be provided with Building Permit drawing submission.

Metal frame with wood top.

Table to be mounted to surface.



1 Bench - Type 1, 2, and 3
L1.03 Scale: 1:20

Elevation / Plan / Section

2 Bench - Rooftop - Type 4, 5, and 6
L1.03 Scale: NTS

Notes

3 Communal Table & Seating
L1.03 Scale: NTS

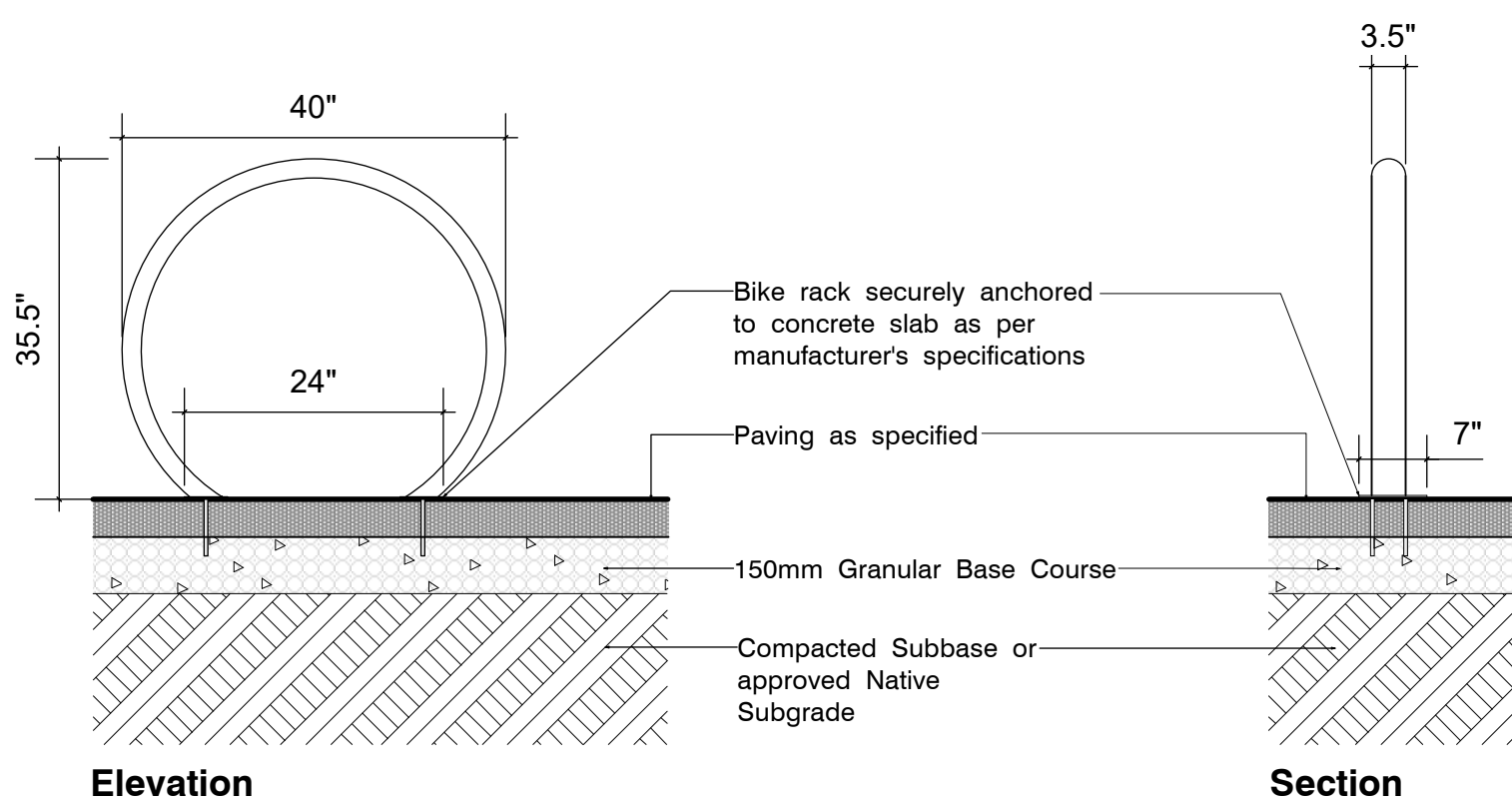
Notes

Loop 2 Space Bike Rack LBRP-1 (Aluminum) (or eq.)
Quantity: 3

Specifications:
Surface Mount
(Mounting kit to be included)

Capacity: up to 2
Height: 35.5\" (902mm)
Width: 40\" (1016mm)
Weight: 16 LBS (7.25kg)
Finish: Powder Coated Carbon Black

Wishbone Site Furnishings
210-27090 Gloucester Way
Langley, BC
1-866-626-0476
604-626-0476
www.wishbonetd.com



Elevation

Section

Notes:

Install gate as per manufacturer's specifications.

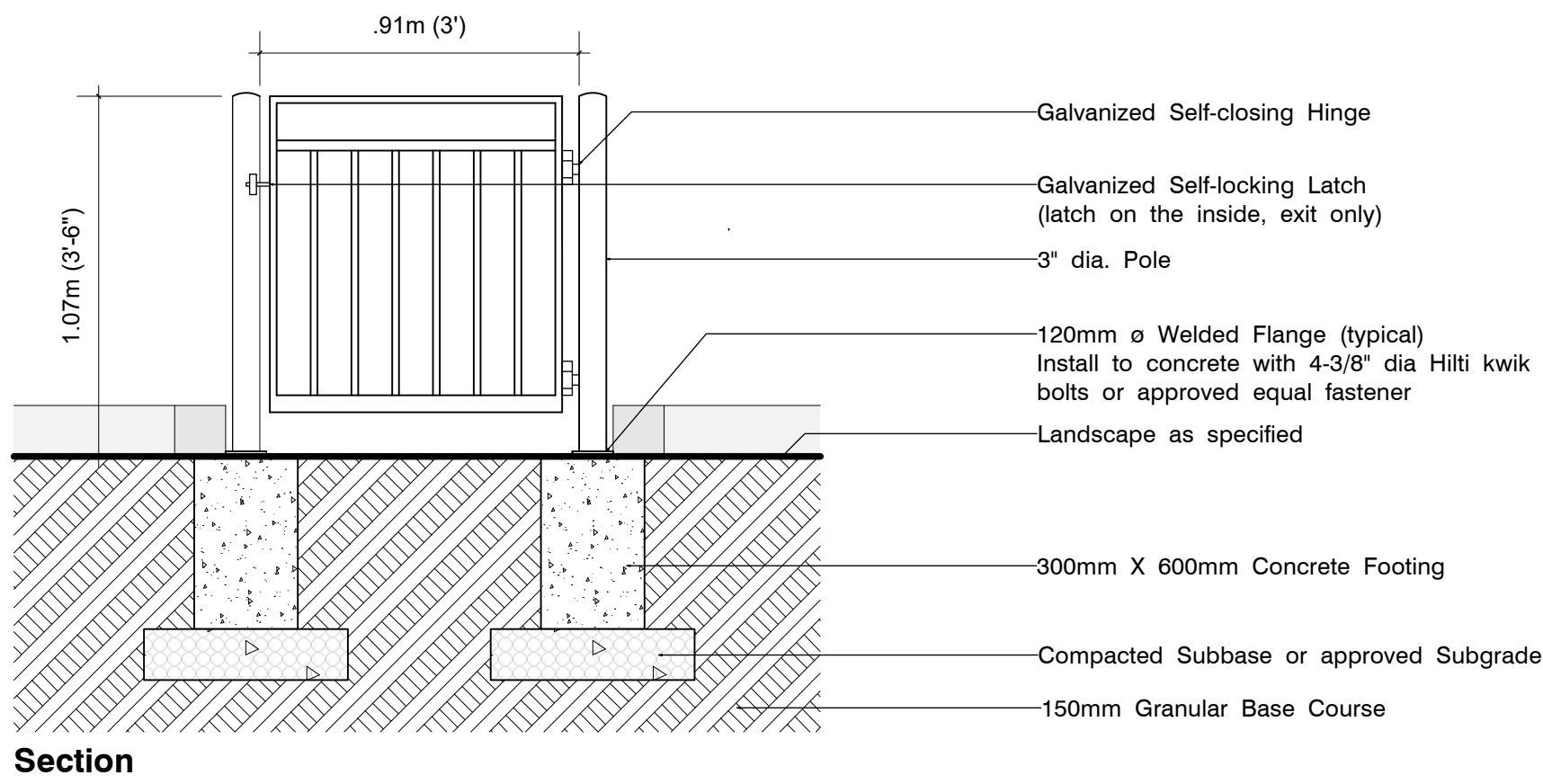
All metal to be hot dipped galvanized after fabrication.

All welds to be ground smooth.

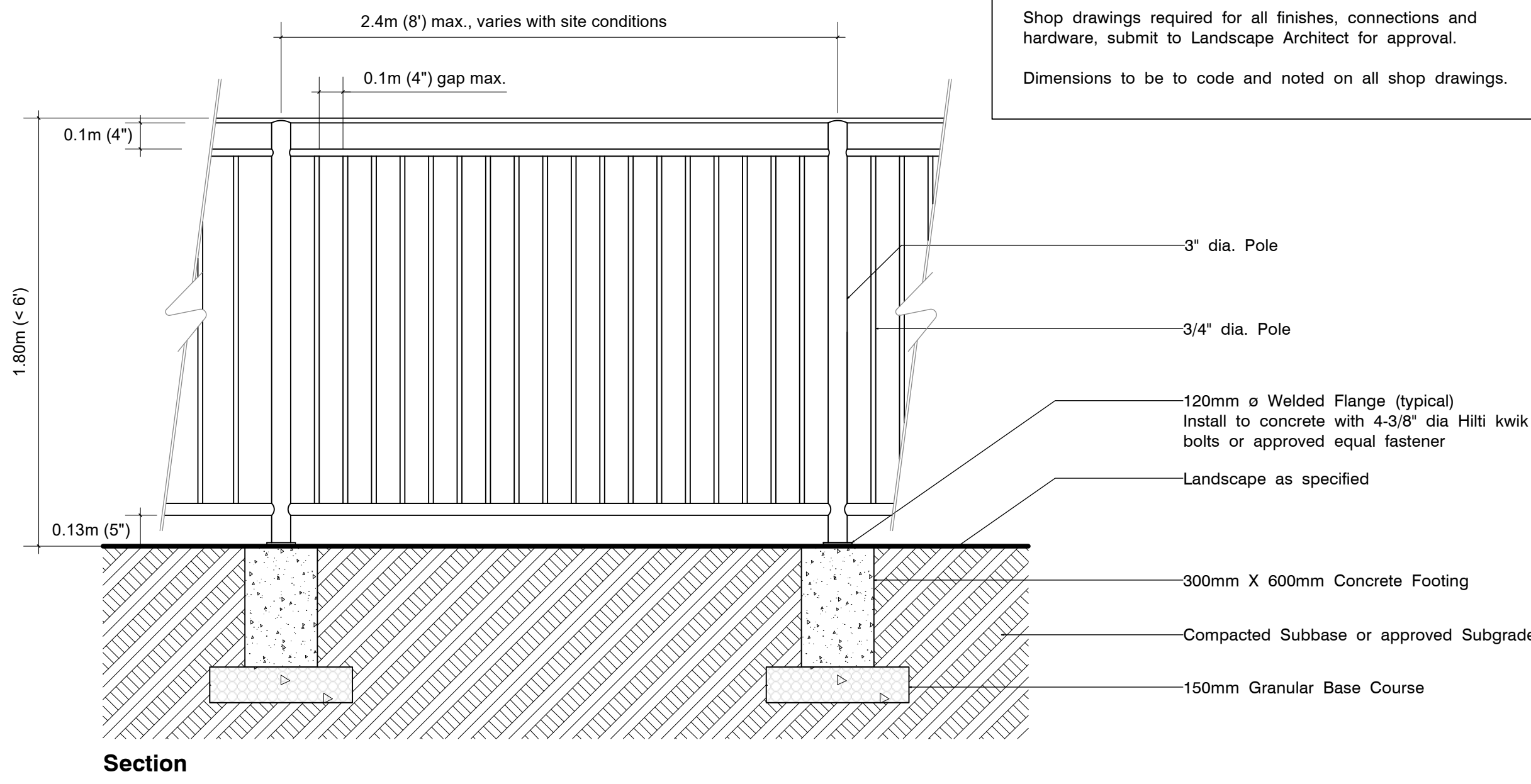
Black 700 Powder coat finish.

Shop drawings required for all finishes, connections and hardware, submit to Landscape Architect for approval.

Dimensions to be to code and noted on all shop drawings.



Section



Section

Notes:

All metal to be hot dipped galvanized after fabrication.

All welds to be ground smooth.

Black 700 Powder coat finish.

Shop drawings required for all finishes, connections and hardware, submit to Landscape Architect for approval.

Dimensions to be to code and noted on all shop drawings.

4 Bicycle Rack
L1.03 Scale: NTS

Elevation / Section

5 Gate - Residential Patio Entrance
L1.03 Scale: 1:20

Section

6 Fence Type 01 - 1.80m Black Metal Picket
L1.03 Scale: 1:20

Section

CLIENT

Windley Developments

RECEIVED
DP1405
2025-NOV-03
Current Planning

NO.	DATE	ISSUE
1	10-15-2025	DP SUBMISSION

NO. | DATE | REVISION

PROJECT 25014

WELLINGTON HOUSING DEVELOPMENT

4444/4446 Wellington Road
Nanaimo, BC

LANDSCAPE DETAILS

CITY FILE NO. XXX####

SCALE AS SHOWN

START DATE 2025-08-01

DB CM

CB KS

L1.03



Product Image

SOLERA AQUIL - Bollard (or equal)
Quantity: 16

Mounting:
The fixture attaches securely to the ground and anchoring plate using four flush-mounted anchor bolts. Anchoring as per manufacturers specifications.

Lens: CL (Clear Lens)

Light Engine (per head): 10 W

Lamp: High power LEDs with 50,000 hrs. rated lamp life L70% lumen maintenance 3000K, 3500K, 4000K, 5000K color temperature CRI 80

Light Distribution: Type II (std), Type III, Type IV

Driver: 60Hz, 120-277V / 347V electronic LED driver, thermally protected with low THD. 6kV native surge protection and 4kV EFT with ambient operating temperature -40°C to 55°C.

Options: tamperproof hardware, tamperproof bits, ground fault receptacle, button photocell (voltage specific), base cover

Height: 28" (0.71m)
Finish: BL (Matte Black)

Solera
120 Walker Drive, Brampton, ON, Canada
1-877-765-3722
www.soleracorp.com



Product Image

BEGA Recessed Wall Luminaire 24060 (or equal)
Quantity: 18

Specifications:
Asymmetrical Forward Throw

Operating Voltage: 120-277V AC
Luminaire Lumens: 848 Lumens (3000K)
Height: 5" (127mm)
Width: 13" (330mm)
Depth: 5-1/2" (139mm)
Finish: Powder Coated Matte Black 3mil thickness

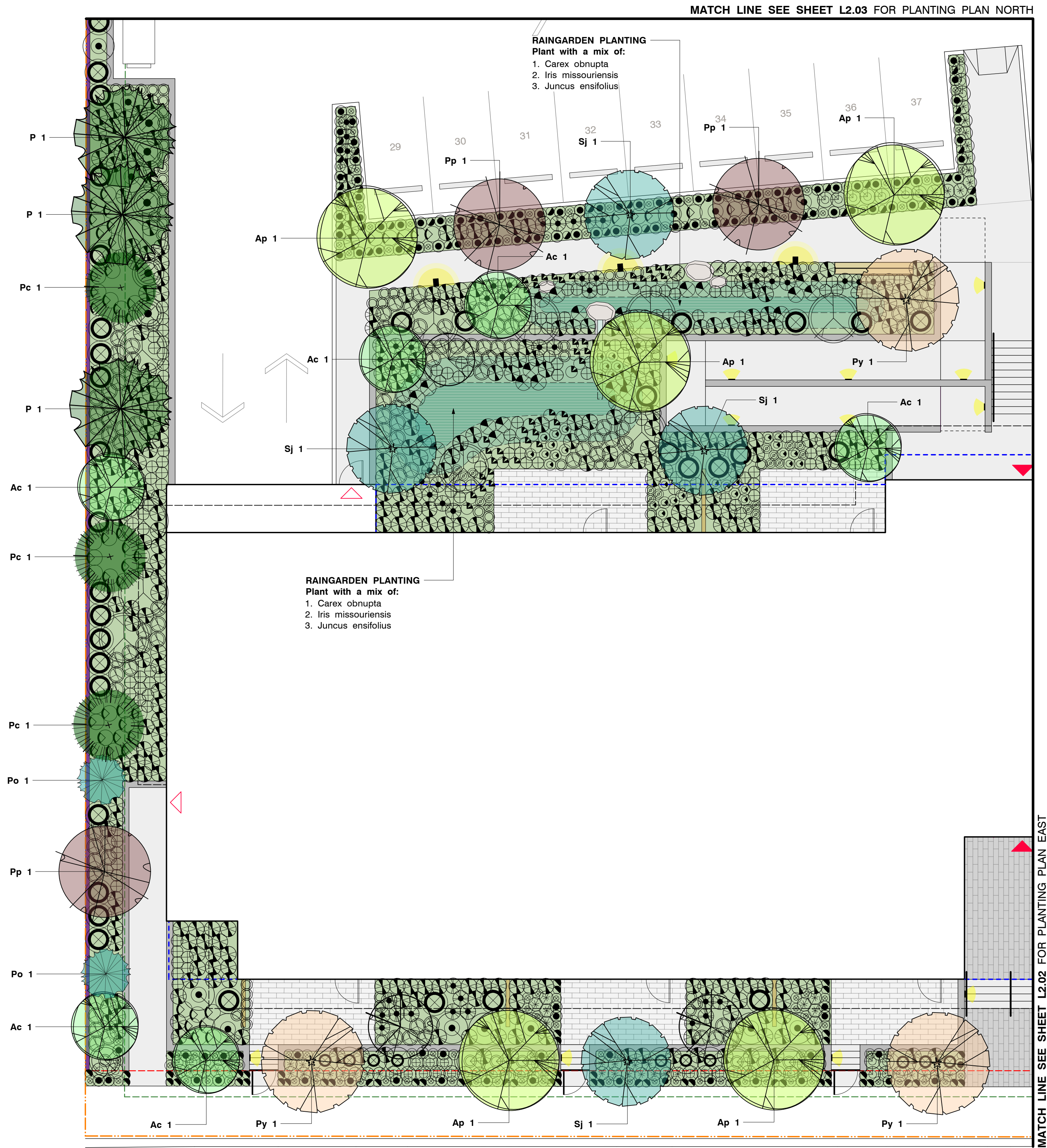


Product Image

BEGA LED Pole-top Luminaire B84252 (or equal)
Quantity: 4

Specifications
Round pole and anchorage kit as per manufacturers specifications
18' high round aluminium pole, same finishing as luminaire

Luminaire Lumens: 2050 lm
LED Watts: 12.6W
System Watts: 17.0W
Controllability: 0-10V, TRIAL, and ELV dimmable
Finish: Powder Coated Matte Black 3mil thickness



PLANTING PLAN WEST
SCALE 1:100



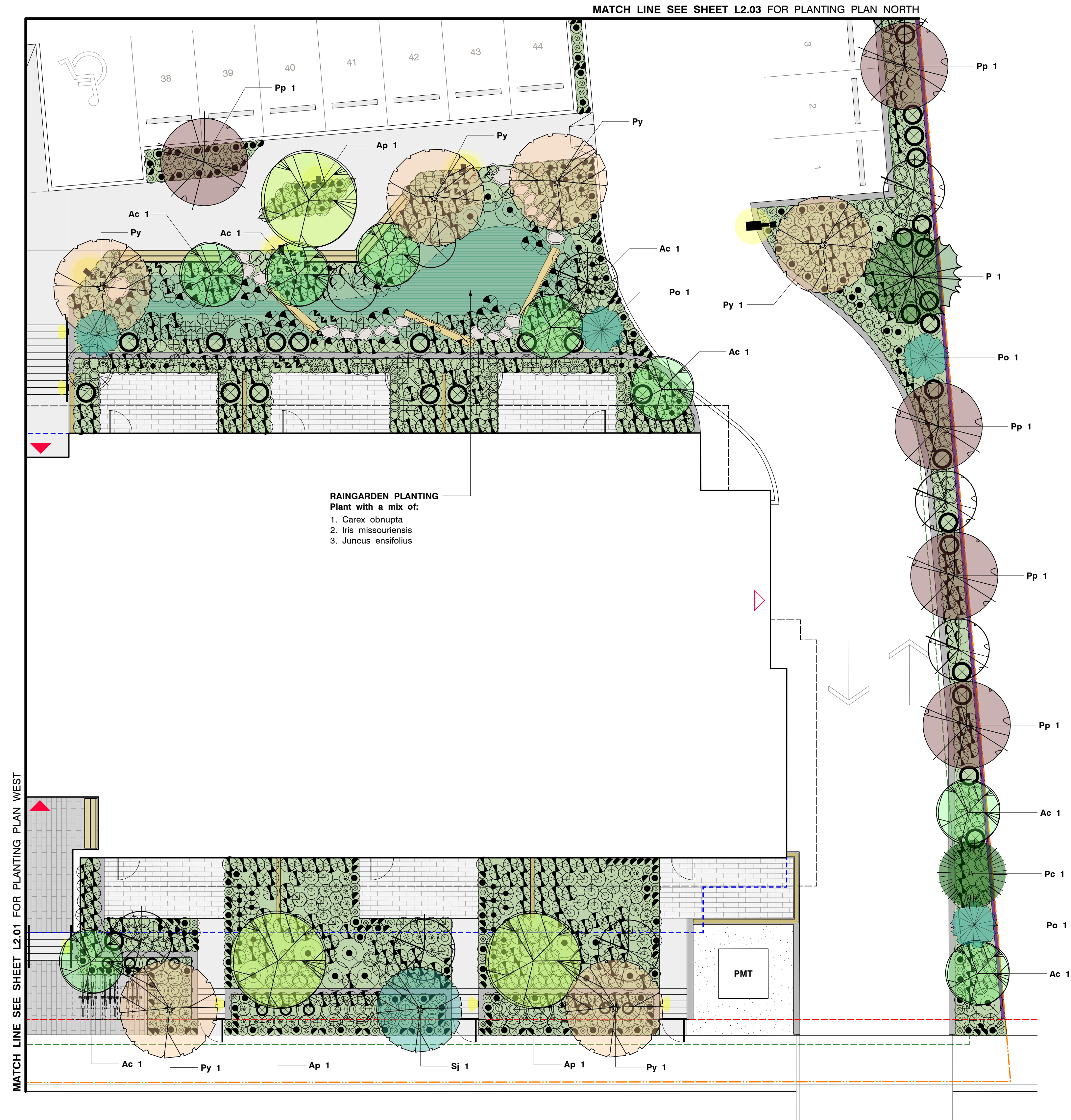
Refer to **Sheet L2.02** for Planting Plan East

Refer to **Sheet L2.03** for Planting Plan North

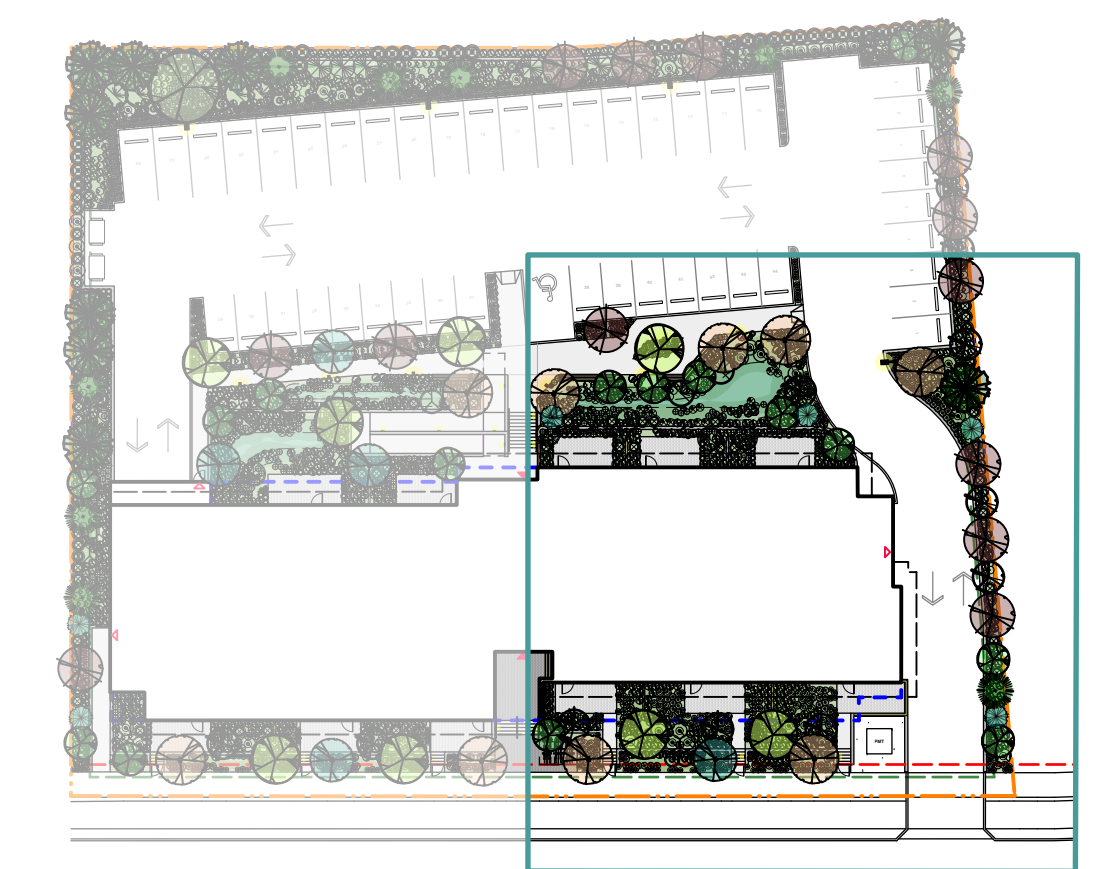
Refer to **Sheet L2.04** for Planting Plan Rooftop

Refer to **Sheet L2.05** for Plant Legend, List & Notes

NOT FOR CONSTRUCTION



PLANTING PLAN EAST
SCALE 1:100



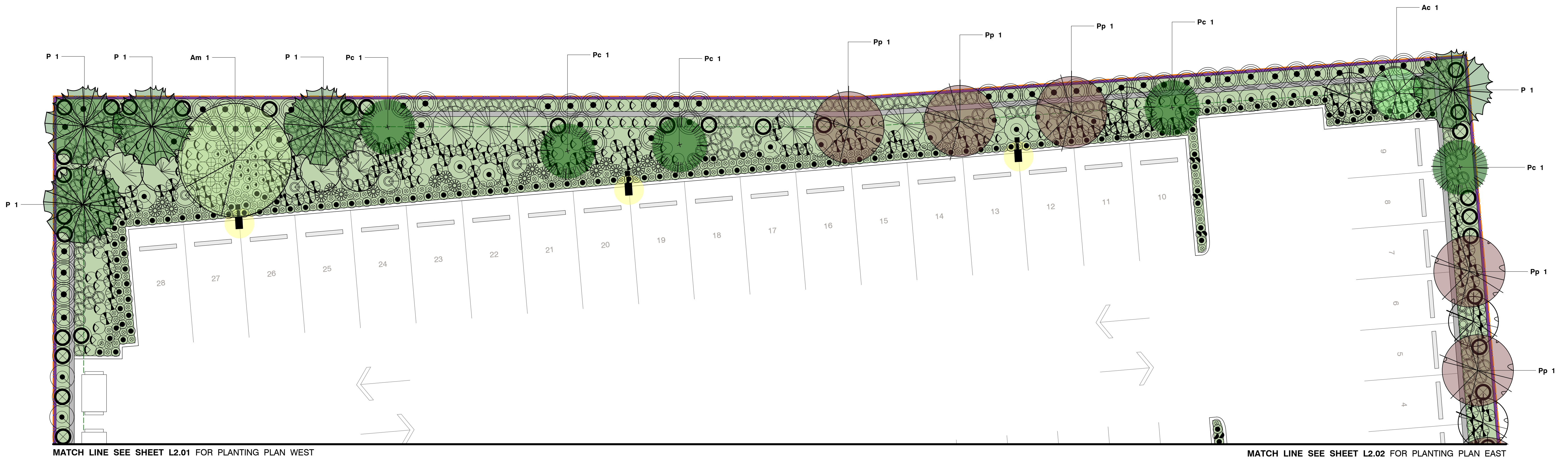
Refer to **Sheet L2.01** for Planting Plan West

Refer to **Sheet L2.03** for Planting Plan North

Refer to **Sheet L2.04** for Planting Plan Rooftop

Refer to **Sheet L2.05** for Plant Legend, List & Notes

NOT FOR CONSTRUCTION



PLANTING PLAN NORTH
SCALE 1:100



Refer to **Sheet L2.01** for Planting Plan West

Refer to **Sheet L2.02** for Planting Plan East

Refer to **Sheet L2.04** for Planting Plan Rooftop

Refer to **Sheet L2.05** for Plant Legend, List & Notes

NOT FOR CONSTRUCTION

CLIENT

Windley Developments

RECEIVED
DP1405
2025-NOV-03
Current Planning

NO. | DATE | ISSUE

1 | 10-15-2025 | DP SUBMISSION

NO. | DATE | REVISION

PROJECT 25014

WELLINGTON HOUSING DEVELOPMENT

4444/4446 Wellington Road
Nanaimo, BC

PLANTING PLAN NORTH

CITY FILE NO. XXX###

SCALE 1:100

START DATE 2025-08-01

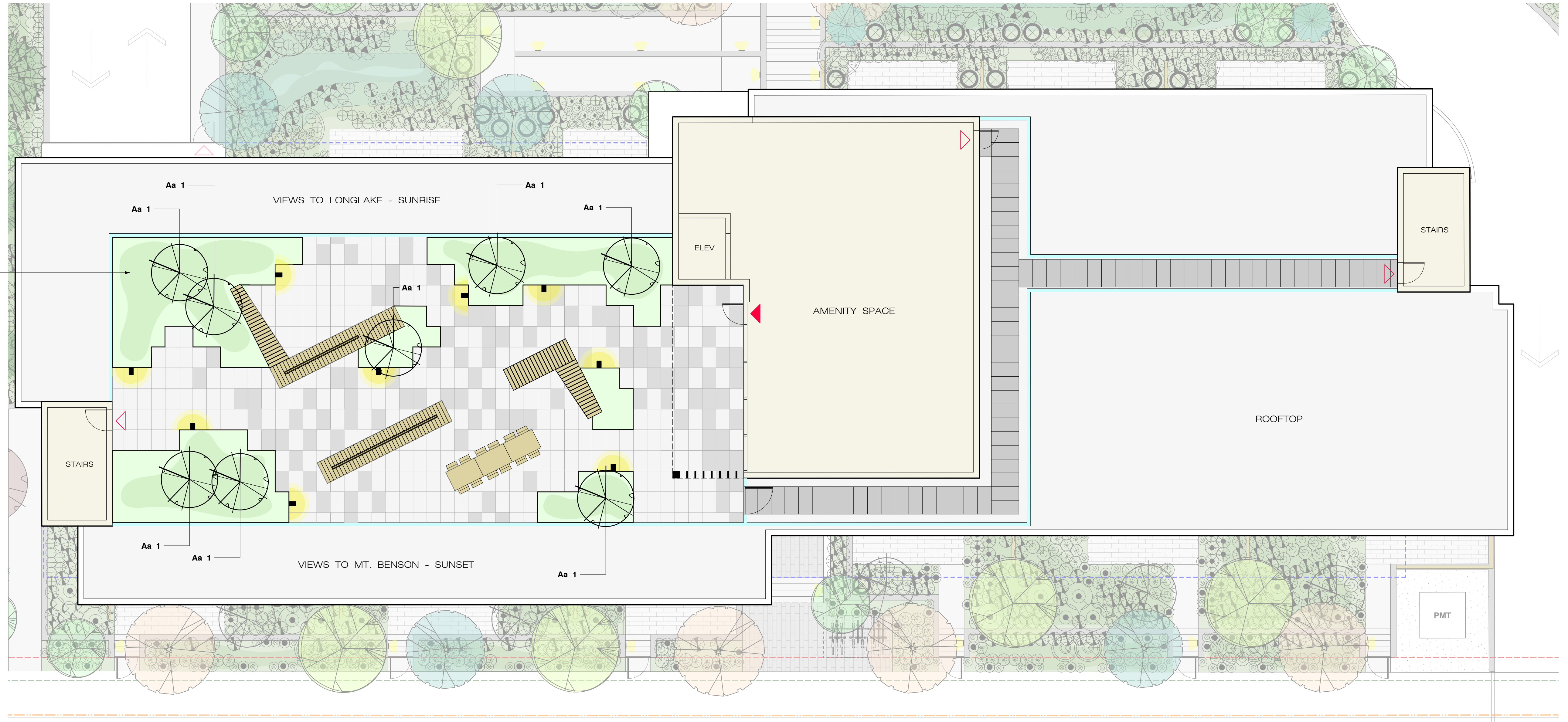
DB CM

CB KS



L2.03

- ROOFTOP PLANTING
Plant with a mix of:
1. Allium cernuum
 2. Armeria maritima
 3. Eriophyllum lanatum
 4. Festuca roemerii
 5. Fragaria chiloensis
 6. Plectritis congesta
 7. Sedum spathulifolium



ROOFTOP LANDSCAPE PLAN

SCALE 1:100

Refer to **Sheet L2.01** for Planting Plan West

Refer to **Sheet L2.02** for Planting Plan East

Refer to **Sheet L2.03** for Planting Plan North

Refer to **Sheet L2.05** for Plant Legend, List & Notes

NOT FOR CONSTRUCTION

